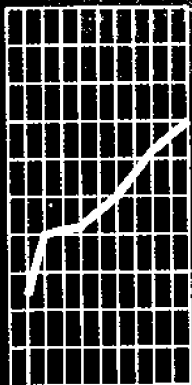




July 1997

EMBARGO: 11:30 AM (CANBERRA TIME) TUES 8 JULY 1997

Tasmanian Statistical Indicators





**TASMANIAN STATISTICAL INDICATORS
JULY 1997**

**Colin Nagle
Acting Regional Director, Tasmania**



CONTENTS

	Page
MAIN FEATURES	v
TABLES	
1 Population	1
2 Births, deaths and marriages registered	1
3 Labour force status	2
4 Labour force status by region, males	3
5 Labour force status by region, females	4
6 Labour force status by region, persons	5
7 Teenage labour market	6
8 All employed persons by occupation	7
9 Employed wage and salary earners, sector and industry	8
10 Average hours worked	8
11 Job vacancies	9
12 Industrial disputes	9
13 Average weekly earnings of employees	10
14 Weekly award rates of pay indexes, full-time adult employees	10
15 Summary of annual movements in wages and prices	11
16 House price index numbers, Hobart	11
17 Consumer price index, Hobart and eight capital cities combined	12
18 Price index of materials used in building other than house building, Hobart	13, 14
19 Production of selected commodities	15
20 Livestock slaughtering: original	16
21 Livestock slaughtering: seasonally adjusted and trend	16
22 Meat production	17
23 Principal mineral concentrates produced	17
24 Sawmills and plywood mills, logs delivered and timber produced	18
25 Chipping and grinding of wood	18
26 Logs delivered for milling or chipping	19
27 Building approvals	20
<hr/>	
INQUIRIES	<ul style="list-style-type: none"> • <i>for further information about statistics in this publication and the availability of related unpublished statistics, contact the Hobart office of the ABS on (03) 6222 5800.</i> • <i>for information about other ABS statistics and services, please refer to the back cover of this publication.</i>
<hr/>	

	Page
28 Secured housing commitments	20
29 Banking statistics	21
30 Private new capital expenditure by type of asset	21
31 Passenger arrivals and departures, Tasmania	22
32 Total passenger arrivals by air and sea, Tasmania	22
33 Accommodation statistics	23
34 Registrations of new motor vehicles	24
35 Turnover of retail establishments at current prices	24
36 Major Statistical Indicators—Australia and State comparisons	25
 EXPLANATORY NOTES	 26

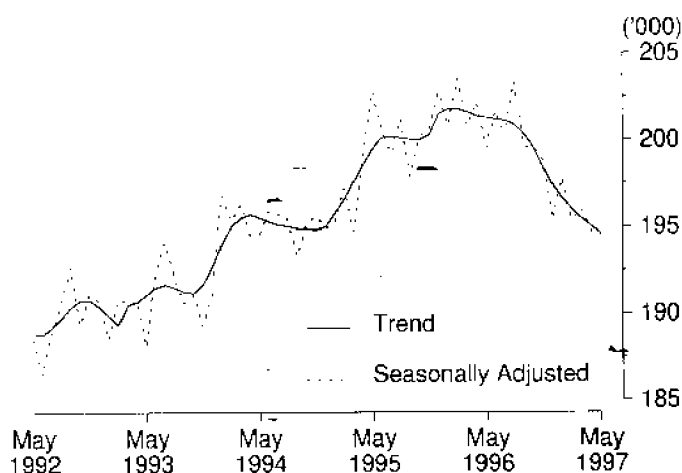
MAIN FEATURES

EMPLOYMENT

State comparisons
trend estimates

The Australian and State *trend* series comparisons are given on page 25. There was a decrease of 3.3% in Tasmania's employment over the year to May 1997. The largest percentage increase in employment was in Western Australia (1.9%). Next followed Queensland (1.3%), New South Wales (1.0%), Victoria (0.8%) and South Australia (0.4%).

EMPLOYMENT, TASMANIA



Regional comparisons
original terms

In the Hobart and Southern Statistical Divisions the estimate of employment in *original* terms in March 1997 was 99,500 and compares with 101,500 in March 1996. The estimate of employment in the Northern Statistical Division in March 1997 was 56,000 and compares with 56,400 in March 1996. The estimate of employment in the Mersey-Lyell Statistical Division was 41,300 in March 1997, and compares with 43,700 for March 1996.

(See tables 3-8, pages 2-7.)

THE LABOUR FORCE

Trend estimates

There were an estimated 218,100 persons (based on *trend* estimates) in the labour force in May 1997, and an estimated 369,500 civilian Tasmanians aged 15 years or more, yielding a labour force participation rate of 59.0%. This compares with 61.1% in May 1996.

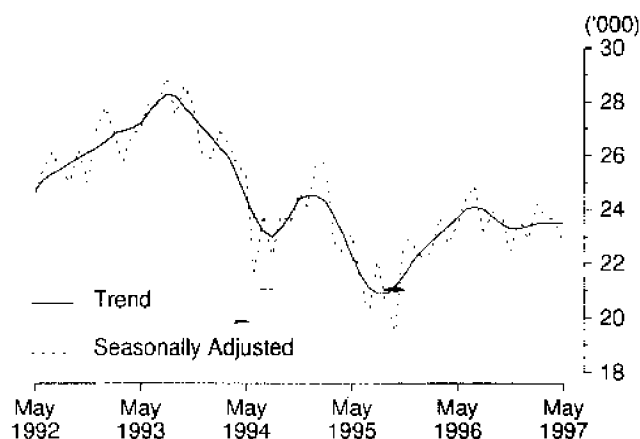
For males, the *trend* estimate of the participation rate was 69.5%, compared with 72.1% for May 1996. For females, the trend estimate of the participation rate was 48.9%, compared with 50.3% in May 1996.

(See table 3, page 2.)

UNEMPLOYMENT

Trend estimates The *trend* estimate of the number of unemployed persons in Tasmania for May 1997 was 23,500. This compares with 23,700 for May 1996. The *trend* estimate of the unemployment rate of 10.8% in May 1997 compares with 10.5% in May 1996. (See tables 3-8, pages 2-7.)

UNEMPLOYMENT, TASMANIA



AWARD RATES OF PAY INDEXES

Original terms The movement, from April 1996 to April 1997, of weekly award rates of pay indexes for Tasmania was 0.9% for full-time adult females and 0.9% for full-time adult males, for a combined annual increase of 0.9%. For Australia, the figures were 1.5% for females and 1.0% for males, for a combined annual increase of 1.2%.

For full-time adult female employees in Tasmania, the largest industry increases over this 12 month period occurred in the Transport and storage industry (7.0%); and the Recreation, personal and other services industry (2.6%).

For the same period for full-time adult male employees in Tasmania, the largest industry increases occurred in the Recreation, personal and other services industry (2.6%); and the Manufacturing industry (2.0%).

The largest occupation increases over the same period for full-time adult female employees occurred in Tradespersons (1.5%); and Salespersons and personal service workers (1.3%).

For full-time adult male employees the largest occupation increase over the period occurred in Plant and machine operators, and drivers (1.3%). This was followed by Salespersons and personal service workers (1.1%); and Labourers and related workers (1.1%).

Source: *Award Rates of Pay Indexes, Australia*, ABS catalogue no. 6312.0.

BUILDING MATERIALS PRICE INDEXES

Original terms The price index of materials used in house building in Hobart fell by 0.7% over the twelve months ending April 1997. All other capital cities recorded increases over the period, with Adelaide being the highest, at 2.7%. The weighted average of the capital cities increased by 1.3% over the same period.

For the month of April 1997, the index for Hobart remained steady, while that for the weighted average of the eight capital cities increased by 0.3%.

The price index of materials used in building other than house building in Hobart recorded an increase of 1.4 % over the twelve months ending April 1997. All of the other state capitals recorded increases over the year, with Perth being the highest at 1.6 %. The index for the weighted average of the eight capital cities increased by 1.0 % over the same period.

For the month of April, the index for Hobart increased by 0.1%, compared to 0.2% for the weighted average of the eight capital cities. All of the capitals recorded increases, except for Melbourne and Brisbane which both recorded decreases of 0.1%.

Components which recorded changes in Hobart's materials other than house building price index over the year ending April 1997 were structural timber (down 6.8%) and pre-cast concrete products (up 2.2%). (See tables 15 and 18, pages 11 and 13.)

LIVESTOCK SLAUGHTERING

Trend estimates In April 1997, the *trend* estimate for the number of cattle and calves slaughtered in Tasmania was 3.6% higher than that recorded in the previous month. The number of sheep and lambs slaughtered increased by 2.6%, and the number of pigs slaughtered increased by 2.4% over the same period.

The *trend* estimate of the number of cattle and calves slaughtered in April 1997 was 24,500, which was 31.5% above the number slaughtered in April 1996.

The *trend* estimate for the slaughtering of sheep and lambs was 73,600 in April 1997, which was 23.6% above the number slaughtered in April 1996. This was the seventh successive monthly increase in the number of sheep and lambs slaughtered in Tasmania, but well below the *trend* estimate of 79,700 slaughtered in April 1995.

The *trend* estimate of 7,200 pigs slaughtered in April 1997 was 1.5% above the number slaughtered in April 1996, but 7.5% below the number slaughtered in April 1995.
(See table 21, page 16.)

BUILDING APPROVALS

Original terms There were 196 dwelling units approved during April 1997 in Tasmania. This was an increase of 56.8% on the March 1997 figure of 125 but a 20.3% decrease on the number recorded for April 1996 (246).

For the twelve months ended April 1997 there were 1,966 new dwelling units approved, 24.4% below the 2,636 units recorded for the twelve months ended April 1996.

The value of new residential building approved, at current prices, in April 1997 was \$16.9 million, 54.7% above the March 1997 figure, and 25.9% below the figure recorded for April 1996. At average 1989-90 prices the value of new residential building work approved for the March quarter 1997 was \$29.9 million, a decrease of 16.5% on the previous quarter and 34.9% on the March quarter 1996.

The value of non-residential building approved, at current prices, in April 1997 was \$5.5 million, 46.2% below the March 1997 figure and 53.5% below the April 1996 figure. At average 1989-90 prices the value of non-residential building work approved for the March quarter 1997 was \$32.1 million, an increase of 50% on the previous quarter but a 51.2% decrease on the March quarter 1996.

(See table 27, page 20.)

HOUSING FINANCE

Trend estimates The *trend* estimate for the number of new secured housing finance commitments entered into in Tasmania in April 1997 was 794 dwellings, a decrease of 0.8% on the previous months figure and a fall of 7.6% when compared to April 1996.

The value of new commitments in April 1997 was \$55.2 million, down 0.5% on the March value, and down 7.1% on April 1996.

The Tasmanian *trend* is against the national *trend* with the total number of Australian dwelling commitments increasing 9.4% to 41,401 dwellings between April 1996 and April 1997. The value of new commitments increased 20.3% to \$4,435.7 million.

(See table 28, page 20.)

PRIVATE NEW CAPITAL EXPENDITURE

Original terms Total private new capital expenditure in Tasmania, for March quarter 1997 was \$165 million. This was 18.7% more than was recorded for March quarter 1996 but was 11.8% lower than the figure for December quarter 1996.

Over 70 % of new capital expenditure was spent by the Manufacturing industry. More than 82% of all new capital expenditure was on Equipment, Plant and Machinery.

(See table 30, page 21.)

GOVERNMENT FINANCE STATISTICS

Original terms For the 1995-96 financial year, the Tasmanian local government sector returned a surplus of \$4 million, compared with \$9 million in 1994-95, while capital outlays have increased 15% from \$87 million to \$100 million. The value of current outlays have increased 10% on the previous year's figure to \$175 million. 1995-96 is the sixth consecutive year that the local government sector has returned a surplus.

Tasmanian local government authorities raised \$142 million in taxes, fees and fines in 1995-96 compared to \$132 million in 1994-95, an 8% increase. Municipal rates was the largest contributor totalling \$132 million, an increase of 7% on the 1994-95 figure.

While the net debt position of individual local government authorities varies, with some authorities in a net asset position and others in a net liability position, the net debt position of the Tasmanian local government sector improved from \$40 million to \$34 million for 1995-96. The decrease consisted of a reduction in gross debt from \$180 million to \$172 million and a decrease in total cash, deposits and lending from \$140 million to \$137 million. The net debt of the local government sector has decreased steadily over recent years, as a consequence of recurring surpluses.

Source: *Government Finance Statistics, Tasmania, 1995-96*, ABS catalogue no. 5501.6.

STATE ACCOUNTS

Trend estimates Tasmanian Gross State Product (GSP) grew 1.0% in the March quarter 1997, as measured by the *trend* series at constant prices. This is slightly below the national trend, with Australian Gross Domestic Product growing 1.1% during the March quarter. Victoria recorded the highest quarter of growth (1.4%), while South Australia recorded the lowest (0.4%).

Tasmania's annual increase in GSP was 1.0% (March 1996 to March 1997) as measured by the *trend* series at constant prices. Tasmanian annual GSP growth was below the national trend, with Australian Gross Domestic Product growing 3.6% during the same period. Western Australia recorded the largest annual increase (3.9%), closely followed by Queensland (3.8%), while Tasmania (1.0%) and South Australia (1.0%) had the lowest.

Source: *Australian National Accounts: State Accounts*, ABS catalogue no. 5242.0 and *National Income, Expenditure and Product*, ABS catalogue no. 5206.0.

TOURIST ACCOMMODATION

Original terms The room occupancy rate for hotels, motels and guest houses in Tasmania for March quarter 1997 was 62.9%, compared with 67.1% recorded in March quarter 1996. There were 317,498 room nights occupied for the March quarter 1997, a decrease of 5.8% from the figure recorded for March quarter 1996.

The unit occupancy rate for holiday flats, units and houses for March quarter 1997 increased to 65.5%, compared with 64.2% recorded in the March quarter 1996.

Caravan parks occupancy rate of 43.8%, for March quarter 1997, was the highest quarterly occupancy rate recorded since September quarter 1982.

(See table 33, page 23.)

NEW MOTOR VEHICLE REGISTRATIONS

Original terms There were 1,047 new motor vehicles (excluding motorcycles) registered in Tasmania during April 1997. This was 9.3% above the 958 registered in March 1997 and 28.0% above the figure for April 1996 (818).

(See table 34, page 24.)

RETAIL

Original terms In *original* terms, the estimate of retail turnover in Australia during April 1997 was \$9,956.0 million, 2.3% above the figure recorded in April 1996.

In *original* terms, the estimate of retail turnover during April 1997, for Tasmania, was \$245.9 million, 3.4% above the figure recorded in April 1996.

Trend estimates The *trend* estimate of retail turnover in Australia during April 1997, was \$10,435.0 million, 2.3% higher than for April 1996.

The *trend* estimate of retail turnover in Tasmania recorded for April 1997, was \$250.8 million, an increase of 1.4% on the figure recorded April 1996.

The monthly trend estimate for turnover of retail and selected service establishments for Tasmania has shown an easing of the growth rate over the last four months.

(See table 35, page 24.)

1

POPULATION: Original

Year or quarter	Estimated resident population at end of period	Natural increase ¹	Net estimated migration gain	Total population growth	Annual growth rate ²
	'000	'000	'000	'000	%
Year ended 30 June					
1992	469.8	3.2	- 0.3	3.0	0.64
1993	471.6	3.1	- 1.5	1.8	0.38
1994	472.9	3.1	- 2.0	1.3	0.28
1995	473.7	2.9	- 2.4	0.8	0.18
1996 p	474.6	2.6	- 2.2	0.9	0.18
Quarter					
1995					
September p	474.1	0.7	- 0.5	0.4	0.17
December p	474.2	0.5	- 0.6	0.1	0.18
1996					
March p	474.5	0.8	- 0.7	0.2	0.16
June p	474.6	0.6	- 0.4	0.1	0.18
September p	474.7	0.6	- 0.5	0.1	0.11
December p	474.2	0.6	- 1.1	- 0.4	0.01

¹ Excess of live births registered over deaths registered (based on usual State of residence).

² Percentage growth from same quarter in previous year.

(Source: Australian Demographic Statistics, ABS catalogue number 3101.0)

2

BIRTHS, DEATHS AND MARRIAGES REGISTERED: Original

Year or quarter	Births		Deaths		Infant mortality ¹		Marriages	
	No.	Rate ²	No.	Rate ²	Deaths	Rate ³	No.	Rate ²
Year ended 31 December								
1992	6 956	14.8	3 722	7.9	43	6.2	3 081	6.5
1993	6 804	14.4	3 618	7.7	37	5.4	3 055	6.5
1994	6 836	14.4	3 909	8.3	46	6.7	2 887	6.1
1995	6 558	13.8	3 739	7.9	36	5.5	2 840	6.0
1996 p	6 419	13.5	3 884	8.2	29	4.5	2 653	5.6
Quarter								
1995								
September	1 697	..	982	..	9	5.3	307	..
December	1 446	..	906	..	9	6.2	799	..
1996								
March p	1 748	..	979	..	10	5.7	857	..
June p	1 524	..	969	..	6	3.9	789	..
September p	1 603	..	1 034	..	8	5.0	349	..
December p	1 544	..	902	..	3	1.9	658	..

¹ Registered deaths of children under one year of age.

² Rate per 1,000 of estimated mean population.

³ Rate per 1,000 live births.

(Source: Australian Demographic Statistics, ABS catalogue number 3101.0)

3

LABOUR FORCE STATUS¹: Seasonally adjusted and trend

Month	Seasonally adjusted series				Trend Series			
	Employed '000	Unemployed '000	Unemploy- ment rate %	Participation rate %	Employed '000	Unemployed '000	Unemploy- ment rate %	Participation rate %
MALES								
1996								
May	114.6	14.8	11.4	71.5	115.7	15.0	11.5	72.1
June	116.0	15.1	11.5	72.4	115.8	15.0	11.5	72.2
July	115.1	15.3	11.8	72.0	115.9	14.8	11.3	72.1
August	117.7	14.1	10.7	72.7	115.9	14.6	11.2	71.9
September	115.6	14.4	11.1	71.7	115.6	14.3	11.0	71.6
October	114.4	14.2	11.1	70.9	115.1	14.0	10.9	71.1
November	114.8	12.8	10.1	70.3	114.4	13.9	10.8	70.7
December	113.0	14.7	11.5	70.3	113.7	14.0	10.9	70.3
1997								
January	113.4	13.6	10.7	69.9	113.1	14.1	11.1	70.1
February	112.1	14.7	11.6	69.8	112.7	14.2	11.2	69.9
March	113.4	14.0	11.0	70.1	112.4	14.3	11.3	69.8
April	111.5	15.4	12.1	69.8	112.2	14.4	11.3	69.7
May	112.3	13.4	10.6	69.2	112.0	14.4	11.4	69.5
FEMALES								
1996								
May	84.9	8.7	9.3	50.0	85.6	8.7	9.2	50.3
June	85.7	9.3	9.7	50.7	85.4	9.0	9.5	50.4
July	85.1	9.6	10.1	50.5	85.2	9.2	9.8	50.4
August	85.6	9.1	9.6	50.5	85.0	9.4	10.0	50.4
September	84.0	9.5	10.1	49.8	84.7	9.5	10.1	50.2
October	85.3	9.8	10.3	50.6	84.4	9.5	10.1	50.0
November	84.0	9.4	10.1	49.8	84.1	9.4	10.1	49.8
December	82.6	9.0	9.8	48.8	83.8	9.4	10.1	49.6
1997								
January	84.5	9.3	9.9	49.9	83.5	9.3	10.1	49.4
February	83.3	9.5	10.3	49.4	83.3	9.3	10.0	49.3
March	82.6	9.7	10.5	49.2	83.0	9.2	10.0	49.1
April	83.3	8.3	9.1	48.7	82.8	9.1	9.9	49.0
May	82.3	9.3	10.2	48.8	82.7	9.1	9.9	48.9
TOTAL								
1996								
May	199.5	23.5	10.5	60.5	201.3	23.7	10.5	61.1
June	201.7	24.4	10.8	61.4	201.2	24.0	10.6	61.1
July	200.2	24.9	11.1	61.1	201.1	24.1	10.7	61.1
August	203.3	23.2	10.2	61.4	200.9	24.0	10.7	61.0
September	199.6	23.9	10.7	60.6	200.3	23.7	10.6	60.7
October	199.6	24.0	10.7	60.6	199.5	23.5	10.5	60.4
November	198.8	22.3	10.1	59.9	198.4	23.3	10.5	60.1
December	195.6	23.7	10.8	59.4	197.4	23.3	10.6	59.8
1997								
January	197.8	22.9	10.4	59.8	196.6	23.4	10.7	59.6
February	195.4	24.2	11.0	59.5	196.0	23.5	10.7	59.4
March	196.0	23.7	10.8	59.5	195.5	23.5	10.7	59.3
April	194.7	23.6	10.8	59.1	195.0	23.5	10.8	59.1
May	194.5	22.7	10.4	58.8	194.6	23.5	10.8	59.0

¹ For explanation of terms and concepts, refer to *Labour Force, Australia*, ABS catalogue number 6203.0.
(Source: *Labour Force Australia*, ABS catalogue number 6203.0)

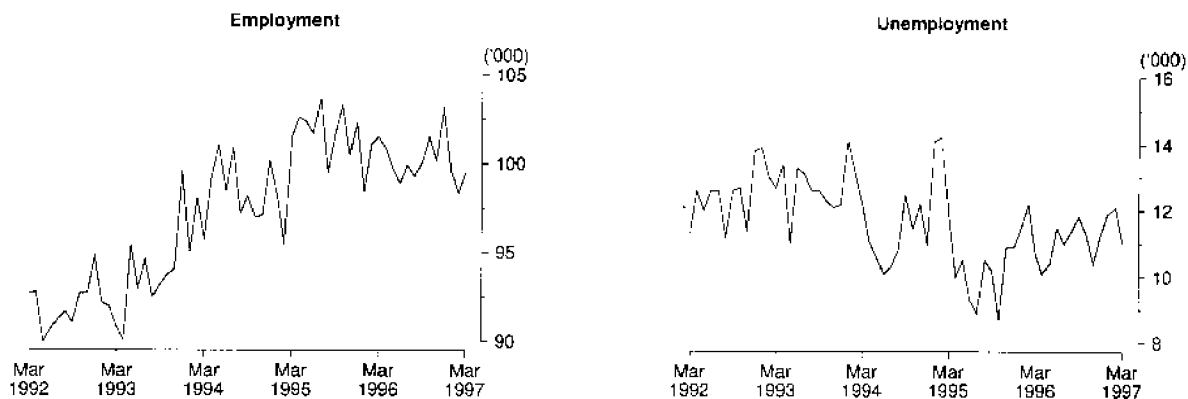
4

LABOUR FORCE STATUS BY REGION, MALES^{1, 2}: **Original**

Month		Total employed '000	Total unemployed '000	Unemployment rate %	Participation rate %
HOBART AND SOUTHERN STATISTICAL DIVISIONS					
1994	March	52.8	8.6	14.0	71.3
1996	March	57.3	6.9	10.8	72.0
1997	January	55.1	7.1	11.4	69.3
	February	54.7	6.9	11.2	68.4
	March	55.4	6.4	10.3	68.5
NORTHERN STATISTICAL DIVISION					
1994	March	32.7	4.7	12.6	73.7
1996	March	31.4	4.7	13.0	72.3
1997	January	33.8	4.4	11.4	73.4
	February	33.4	4.8	12.5	73.3
	March	34.2	3.9	10.1	72.9
MERSEY-LYELL STATISTICAL DIVISION					
1994	March	26.9	4.1	13.2	72.2
1996	March	27.3	2.9	9.7	71.9
1997	January	24.7	3.5	12.4	70.5
	February	25.2	3.4	11.8	72.5
	March	24.5	3.6	12.7	71.5
TASMANIA					
1994	March	112.4	17.4	13.4	72.2
1996	March	116.0	14.5	11.1	72.1
1997	January	113.6	14.9	11.6	70.8
	February	113.4	15.0	11.7	70.7
	March	114.1	13.8	10.8	70.4

¹ For explanation of terms and concepts, refer to *Labour Force, Australia*, ABS catalogue number 6203.0.

² Data in this table are original series, i.e. they are not part of a seasonally adjusted or a trend series. Accordingly, care should be exercised when using these data. New monthly data from each quarter (March, June, September and December) are published two months after the quarter. (Source: Labour Force Estimates—microfiche tables.)

Hobart and Southern Statistical Divisions—Persons: **Original**

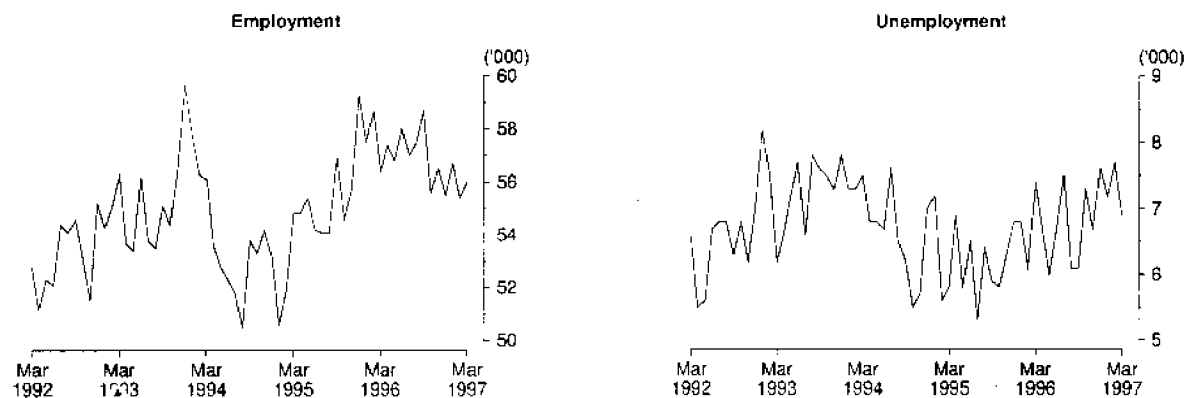
5

LABOUR FORCE STATUS BY REGION, FEMALES^{1, 2}: **Original**

Month		Total employed	Total unemployed	Unemployment rate	Participation rate
		'000	'000	%	%
HOBART AND SOUTHERN STATISTICAL DIVISIONS					
1994	March	43.0	3.6	7.7	50.7
1996	March	44.2	3.8	7.9	51.2
1997	January	44.5	4.8	9.8	52.3
	February	43.6	5.2	10.7	51.5
	March	44.1	4.6	9.4	51.0
NORTHERN STATISTICAL DIVISION					
1994	March	23.4	2.8	10.7	50.0
1996	March	25.1	2.7	9.7	53.9
1997	January	22.9	2.9	11.1	49.0
	February	22.0	2.9	11.6	46.7
	March	21.8	3.1	12.3	47.6
MERSEY-LYELL STATISTICAL DIVISION					
1994	March	16.4	2.2	11.6	44.8
1996	March	16.4	2.4	12.9	44.8
1997	January	15.5	2.3	13.0	43.6
	February	16.1	2.5	13.2	46.8
	March	16.8	2.1	10.9	46.9
TASMANIA					
1994	March	82.9	8.6	9.4	49.2
1996	March	85.7	8.9	9.4	50.5
1997	January	82.9	10.0	10.8	49.5
	February	81.8	10.5	11.4	49.1
	March	82.7	9.7	10.5	49.2

¹ For explanation of terms and concepts, refer to *Labour Force, Australia*, ABS catalogue number 6203.0.

² Data in this table are original series, i.e. they are not part of a seasonally adjusted or a trend series. Accordingly, care should be exercised when using these data. New monthly data from each quarter (March, June, September and December) are published two months after the quarter. (Source: Labour Force Estimates—microfiche tables.)

Northern Statistical Division—Persons: **Original**

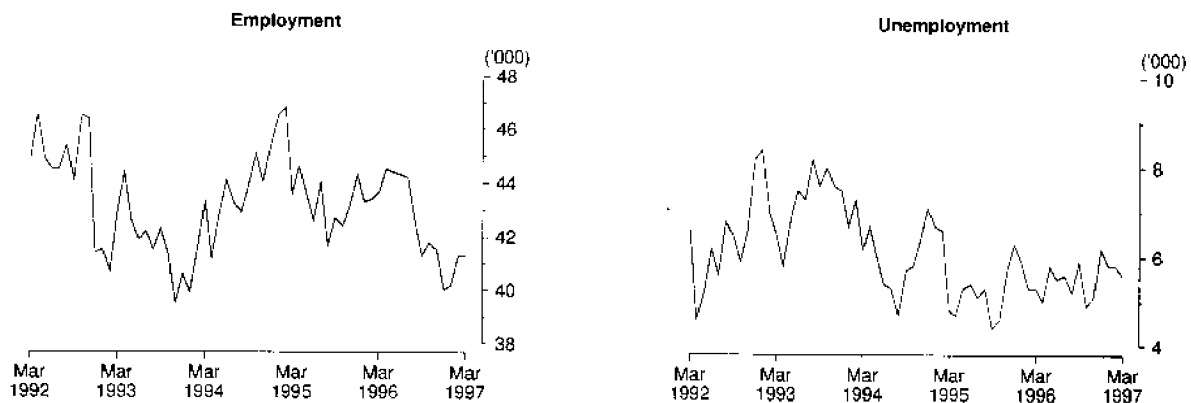
6

LABOUR FORCE STATUS BY REGION, PERSONS^{1, 2}; **Original**

Month		Total employed '000	Total unemployed '000	Unemployment rate %	Participation rate %
HOBART AND SOUTHERN STATISTICAL DIVISIONS					
1994	March	95.8	12.2	11.3	60.6
1996	March	101.5	10.7	9.6	61.3
1997	January	99.6	11.9	10.7	60.6
	February	98.4	12.1	11.0	59.7
	March	99.5	11.0	9.9	59.5
NORTHERN STATISTICAL DIVISION					
1994	March	56.1	7.5	11.9	61.6
1996	March	56.4	7.4	11.5	62.9
1997	January	56.7	7.2	11.3	61.1
	February	55.4	7.7	12.2	59.9
	March	56.0	6.9	11.0	60.3
MERSEY-LYELL STATISTICAL DIVISION					
1994	March	43.3	6.2	12.6	58.7
1996	March	43.7	5.3	10.9	58.4
1997	January	40.2	5.8	12.6	56.9
	February	41.3	5.8	12.3	59.6
	March	41.3	5.6	12.0	59.0
TASMANIA					
1994	March	195.2	26.0	11.7	60.5
1996	March	201.6	23.4	10.4	61.1
1997	January	196.5	24.9	11.3	59.9
	February	195.1	25.6	11.6	59.8
	March	196.8	23.5	10.7	59.6

¹ For explanation of terms and concepts, refer to *Labour Force, Australia*, ABS catalogue number 6203.0.

² Data in this table are original series, i.e. they are not part of a seasonally adjusted or a trend series. Accordingly, care should be exercised when using these data. New monthly data from each quarter (March, June, September and December) are published two months after the quarter. (Source: Labour Force Estimates—microfiche tables.)

Mersey-Lyell Statistical Division—Persons: **Original**

7

TEENAGE LABOUR MARKET^{1, 2}: Original

Month	Employed		Unemployed		Labour force	Not in labour force	Civilian population aged 15-19	Unemployment rate	Unemployment population ratio	Participation rate
	Full-time	Total	Looking for full-time work	Total						
	'000	'000	'000	'000	'000	'000	'000	%	%	%
ATTENDING NEITHER SCHOOL NOR A TERTIARY INSTITUTION FULL TIME										
1994 May	7.9	9.9	2.2	2.5	12.4	1.4	13.8	20.1	18.1	90.0
1996 May	7.0	9.3	2.5	2.7	12.0	1.0	13.0	22.4	20.8	92.2
1997 March	6.9	8.9	3.2	3.5	12.5	1.4	13.8	28.2	25.4	90.1
April	6.3	8.5	2.8	2.9	11.5	1.8	13.3	25.6	22.1	86.4
May	6.0	8.7	3.0	3.3	12.0	1.3	13.3	27.5	24.8	89.9
ATTENDING SCHOOL OR A TERTIARY INSTITUTION FULL TIME										
1994 May	0.0	5.1	0.3	1.4	6.6	13.9	20.5	21.2	6.8	32.2
1996 May	0.2	6.6	0.4	1.1	7.7	13.3	21.0	14.3	5.2	36.7
1997 March	0.1	5.2	0.6	2.4	7.6	12.9	20.5	32.0	11.9	37.0
April	0.4	5.8	0.7	1.8	7.7	13.4	21.1	23.9	8.7	36.3
May	0.0	5.3	0.1	1.3	6.6	14.4	21.0	20.1	6.3	31.5
TOTAL										
1994 May	7.9	15.0	2.6	3.9	19.0	15.3	34.3	20.8	11.4	55.4
1996 May	7.1	15.9	2.9	3.8	19.7	14.3	34.1	19.4	11.1	57.9
1997 March	7.0	14.1	3.8	5.9	20.0	14.2	34.3	29.6	17.3	58.4
April	6.7	14.3	3.5	4.8	19.1	15.2	34.3	24.9	13.9	55.7
May	6.0	14.0	3.1	4.6	18.6	15.7	34.3	24.9	13.5	54.2

¹ Persons aged 15-19 years.

² For explanation of terms and concepts, refer to *Labour Force, Australia*, ABS catalogue number 6203.0. (Source: Labour Force Estimates—microfiche tables.)

8

ALL EMPLOYED PERSONS BY OCCUPATION¹: Original

Occupation	May 1995		May 1996		Proportion of total employed	
	Persons	Males	Females	Persons	May 1995	May 1996
	'000	'000	'000	'000	%	%
Managers and administrators	19.0	13.6	3.4	17.0	9.4	8.5
Farmers and farm managers	6.5	4.0	0.9	4.9	3.2	2.4
Managing supervisors	6.9	6.5	1.5	8.0	3.4	4.0
Other	5.6	3.1	1.2	4.1	2.8	2.0
Professionals	25.1	12.8	10.7	23.5	12.5	11.7
Building and professional engineers	2.4	1.6	—	1.6	1.2	0.8
Health diagnosis and treatment practitioners	3.0	1.3	1.5	2.8	1.5	1.4
School teachers	8.5	1.4	3.7	5.1	4.2	2.5
Business professionals	3.7	3.8	1.4	5.2	1.9	2.6
Other	7.4	4.7	4.1	8.8	3.7	4.4
Para-professionals	14.3	7.3	5.8	13.1	7.1	6.5
Engineering and building associates and technicians	1.6	1.7	0.1	1.8	0.8	0.9
Registered nurses	5.7	0.4	4.0	4.5	2.8	2.2
Other	7.0	5.2	1.7	6.8	3.5	3.4
Tradespersons	29.1	26.3	3.4	29.7	14.4	14.8
Metal fitting and machining tradespersons	2.8	2.4	—	2.4	1.4	1.2
Electrical and electronics tradespersons	4.0	4.5	0.1	4.6	2.0	2.3
Building tradespersons	6.4	6.9	0.1	7.0	3.2	3.5
Other	15.9	12.4	3.2	15.7	7.9	7.8
Clerks	33.0	8.8	26.1	34.9	16.4	17.4
Stenographers and typists	3.8	0.1	3.3	3.4	1.9	1.7
Receptionists, telephonists and messengers	5.0	1.2	4.6	5.7	2.5	2.8
Other	24.2	7.5	18.2	25.8	12.0	12.8
Salespersons and personal service workers	34.2	9.7	23.0	32.7	17.0	16.3
Sales representatives	2.9	2.0	1.3	3.3	1.4	1.6
Sales assistants	15.3	4.0	10.5	14.5	7.6	7.2
Other	16.0	3.7	11.2	14.9	7.9	7.4
Plant and machine operators, and drivers	16.2	15.1	2.1	17.2	8.0	8.6
Road and rail transport drivers	6.9	6.1	0.6	6.6	3.4	3.3
Machine operators	4.4	3.3	1.5	4.8	2.2	2.4
Other	4.9	5.7	—	5.8	2.4	2.9
Labourers and related workers	30.6	21.2	11.6	32.8	15.2	16.3
Trades assistants and factory hands	5.4	3.7	1.4	5.1	2.7	2.5
Agricultural labourers and related workers	7.0	5.8	2.2	8.1	3.5	4.0
Cleaners	6.4	1.3	4.6	5.9	3.2	2.9
Construction and mining labourers	2.0	2.9	0.1	3.0	1.0	1.5
Other	9.8	7.5	3.3	10.7	4.9	5.3
Total employed	201.4	115.0	86.0	200.9	100.0	100.0

¹ For explanation of terms and concepts, refer to *Labour Force, Australia*, ABS catalogue number 6203.0. (Source: Labour Force Estimates - unpublished data.)

9

EMPLOYED WAGE AND SALARY EARNERS, SECTOR AND INDUSTRY¹: Original

Industry	Employees, February 1995					Percentage distribution	
	Private	Public	Private and public			February 1993	February 1995
	No. ('000)	No. ('000)	Males	Females	Persons		
Agriculture, forestry, fishing and hunting	n.a.	0.7	n.a.	n.a.	n.a.	n.a.	n.a.
Mining	1.5	--	1.4	0.1	1.5	1.7	1.1
Manufacturing	20.3	0.1	15.4	4.9	20.4	14.8	15.2
Electricity, gas and water, construction	6.0	2.7	7.6	1.0	8.7	6.8	6.5
Wholesale and retail trade	26.0	—	15.0	11.0	26.1	20.8	19.4
Transport and storage	3.6	1.5	4.1	1.1	5.2	4.1	3.9
Communication	—	2.3	1.8	0.6	2.3	1.6	1.7
Finance, property and business services	10.1	0.9	4.9	6.0	10.9	9.3	8.1
Public administration and defence	—	10.5	6.5	4.0	10.5	7.0	7.8
Community services	14.0	23.4	11.9	25.5	37.4	24.9	27.8
Recreation, personal and other services	10.2	0.6	4.1	6.7	10.8	8.4	8.0
Total all industries	91.8	42.6	73.2	61.2	134.4	100.0	100.0

¹ For explanation of terms and concepts, refer to *Employed Wage and Salary Earners, Australia*, catalogue number 6248.0. (Source: *Employed Wage and Salary Earners*, ABS catalogue number 6248.0.)

10

AVERAGE HOURS WORKED: Original

Month	Average weekly total hours worked, all employed persons ¹			Average weekly overtime hours ²		Percentage of employees working overtime ²
	Males	Females	Persons	Per employee	Per employee working overtime	
1994						
February	37.6	25.8	32.7	1.0	6.9	14.0
1996						
February	37.7	25.6	32.7	0.9	6.5	14.1
May	40.1	27.0	34.5	0.9	5.6	16.0
August	38.8	27.2	33.9	0.8	5.4	14.4
November	38.7	26.8	33.6	0.8	6.2	12.7
1997						
February	38.0	26.2	33.1	0.9	6.6	13.6

¹ For explanation of terms and concepts, refer to *Labour Force, Australia*, ABS catalogue number 6203.0.
² For explanation of terms and concepts, refer to *Job Vacancies and Overtime, Australia*, ABS catalogue number 6354.0.

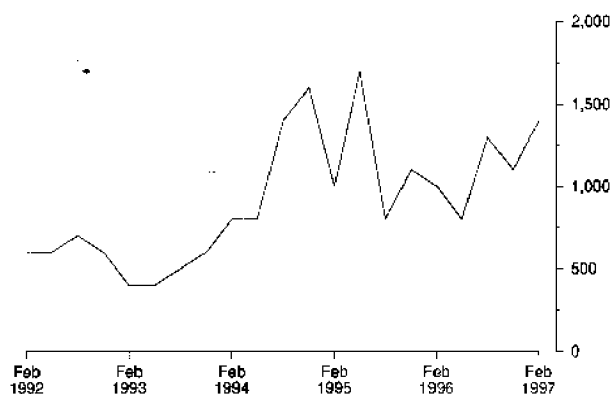
11 JOB VACANCIES¹: Original

Period	Number	Rate ² %
1994		
February	800	0.6
1996		
February	1 000	0.6
May	800	0.5
August	1 300	0.8
November	1 100	0.7
1997		
February	1 400	1.0

¹ For explanation of terms and concepts refer to *Job Vacancies and Overtime, Australia*, catalogue number 6354.0.

² Job vacancies are expressed as a percentage of the number of job vacancies divided by the number of employees plus job vacancies.

JOB VACANCIES: Original



12 INDUSTRIAL DISPUTES¹: Original

Month	Working days lost '000	Twelve months ending	Working days lost per thousand employees no.
1996			
February	0.1	February	23
March	—	March	20
April	0.1	April	20
May	0.2	May	19
June	0.4	June	17
July	4.4	July	39
August	5.2	August	70
September	1.3	September	77
October	0.1	October	77
November	0.3	November	79
December	0.1	December	78
1997			
January	0.0	January	73
February	0.0	February	73
Twelve months ended 1997			
February	12.1		

¹ For explanation of terms and concepts, refer to *Industrial Disputes, Australia*, ABS catalogue number 6321.0.

13

AVERAGE WEEKLY EARNINGS OF EMPLOYEES¹: Original and trend

Quarter	Survey reference period	Full-time adult males		All males	Full-time adult females		All females	Full-time adult persons		All employees
		Weekly ordinary time earnings	Weekly total earnings	Weekly total earnings	Weekly ordinary time earnings	Weekly total earnings	Weekly total earnings	Weekly ordinary time earnings	Weekly total earnings	Weekly total earnings
		\$	\$	\$	\$	\$	\$	\$	\$	\$
ORIGINAL										
1996										
March	16 February	652.70	691.40	617.80	561.10	569.30	391.80	622.90	651.70	510.00
June	17 May	663.40	702.80	621.90	570.10	583.20	389.30	631.90	662.40	503.30
September	16 August	666.90	699.20	624.30	556.30	567.40	387.70	629.10	654.10	506.50
December	15 November	688.50	728.50	643.00	574.20	584.90	393.70	649.90	680.00	517.70
1997										
March	21 February	705.80	742.10	658.80	584.30	594.80	407.80	664.40	691.90	533.10
TREND										
1996										
March	16 February	653.10	691.10	614.30	560.00	571.10	392.90	622.00	651.00	506.40
June	17 May	661.40	698.70	621.90	563.70	575.10	391.20	628.80	657.40	507.10
September	16 August	672.40	709.70	631.80	567.20	578.60	391.30	636.90	665.60	511.00
December	15 November	686.60	723.40	641.80	572.10	583.00	394.40	647.50	675.60	517.70
1997										
March	21 February	702.70	738.40	650.60	578.70	588.50	399.00	659.80	686.70	525.10

¹ For explanation of terms and concepts, refer to *Average Weekly Earnings, States and Australia*, ABS catalogue number 6302.0. (Source: *Average Weekly Earnings, States and Australia*, ABS catalogue number 6302.0.)

14

WEEKLY AWARD RATES OF PAY INDEXES, FULL-TIME ADULT EMPLOYEES¹: Original

(Base: June 1985 = 100.0)

Industry	1994	1996	1997		April
	April	April	February	March	
Mining	137.7	137.7	137.7	137.7	137.7
Manufacturing	146.9	150.2	153.6	153.6	153.6
Electricity, gas and water	133.4	136.4	136.6	136.6	136.6
Construction	142.6	144.8	147.4	147.4	147.4
Wholesale trade	139.9	143.3	147.3	147.9	147.9
Retail trade	139.6	142.7	144.1	144.1	144.1
Transport and storage	138.9	143.1	148.2	148.2	148.2
Communication	135.4	135.4	135.4	135.4	135.4
Finance, property and business services	137.8	139.6	140.0	140.0	140.0
Public administration and defence	148.3	155.1	156.2	156.2	156.2
Community services	140.8	145.2	146.2	146.2	146.2
Recreation, personal and other services	149.2	153.8	157.8	157.8	157.8
Total all industries	141.7	145.3	147.1	147.1	147.1

¹ For explanation of terms and concepts, refer to *Award Rates of Pay Indexes, Australia*, ABS catalogue number 6312.0. (Source: *Award Rates of Pay Indexes, Australia*, ABS catalogue number 6312.0.)

15

SUMMARY OF ANNUAL MOVEMENTS IN WAGES AND PRICES: **Original**

Period	CPI. All groups Hobart	Price index of materials used in house building. All groups, Hobart	Price index of materials used in building other than house building. All groups, Hobart	Average weekly total earnings, full-time adult employees	Weekly award rates of pay index, full-time adult employees
PERCENTAGE CHANGE FROM PREVIOUS YEAR					
1994					
April	..	3.0	1.1	..	1.7
1996					
April	..	1.7	1.4	..	1.2
1996					
May	..	0.6	1.2	3.7	1.1
June	3.0	0.7	1.0	..	1.3
July	..	- 0.1	1.0	..	0.9
August	..	- 0.2	0.9	3.0	0.9
September	2.3	- 0.2	0.8	..	0.8
October	..	- 0.8	0.4	..	0.9
November	..	- 1.0	0.7	4.9	0.7
December	1.8	- 0.5	1.0	..	0.7
1997					
January	..	- 0.7	0.9	..	0.1
February	..	- 0.3	1.1	4.5	0.8
March	1.5	- 0.2	1.3	..	0.6
April	..	- 0.7	1.4	..	0.9

(Sources:

Consumer Price Index, ABS catalogue number 6401.0,

Price Index of Materials Used in House Building, ABS catalogue number 6408.0,

Price Index of Materials Used in Other than House Building, ABS catalogue number 6407.0,

Average Weekly Earnings, States and Australia, ABS catalogue number 6302.0,

Award Rates of Pay Indexes, Australia, ABS catalogue number 6312.0.)

16

HOUSE PRICE INDEX NUMBERS¹, HOBART: **Original**

(Base of each Index: 1989-90 = 100.0)

	Established house price index		Project home price index	
	Index	% change ²	Index	% change ²
1993-94	122.5	5.1	117.7	3.2
1994-95	129.0	5.3	121.3	3.1
1995-96	129.8	0.6	123.4	1.7
1995				
March	129.4	0.9	121.6	0.9
June	130.1	0.5	123.1	1.2
September	129.2	- 0.7	123.5	0.3
December	129.1	- 0.1	123.5	—
1996				
March	129.8	+ 0.5	123.3	- 0.2
June	131.2	+ 1.1	123.3	—
September	130.2	- 0.8	123.3	—
December	128.5	- 1.3	123.3	—
1997				
March	130.4	+ 1.5	123.3	—

¹ Used in calculating the mortgage interest charges component of the Consumer Price Index.² Percentage change over previous period.

(Source: House Price Indexes: Eight Capital Cities, ABS catalogue number 6416.0)

17

CONSUMER PRICE INDEX, HOBART AND EIGHT CAPITAL CITIES COMBINED^{1, 2}: Original
(Base of each index: year 1989-90 = 100.0)

Period	Hobart					
	Food	Clothing	Housing	Household equipment and operation	Transportation	Tobacco and alcohol
1994						
September	113.9	106.6	94.8	112.8	113.9	137.2
December	113.3	105.3	97.6	113.9	115.0	139.1
1995						
March	115.4	105.0	102.7	114.9	115.1	140.3
June	116.1	106.1	104.5	115.4	117.2	143.1
September	117.3	105.9	106.0	116.5	119.4	144.3
December	117.1	105.6	106.5	117.5	120.1	145.9
1996						
March	118.1	106.3	107.2	117.8	119.0	150.3
June	118.4	106.0	107.6	118.5	119.8	153.3
September	120.0	105.9	107.4	119.1	119.7	153.7
December	120.6	105.6	104.8	119.4	121.8	152.7
1997						
March	120.7	105.7	101.9	120.1	122.8	153.1

Period	Hobart			Weighted average of eight capital cities		
	Health and personal care	Recreation and education	Index, all groups	% change over previous period, all groups	Index	% change over previous period
1994						
September	138.7	111.7	113.3	+ 0.8	111.9	+ 0.6
December	138.7	113.0	114.2	+ 0.8	112.8	+ 0.8
1995						
March	140.4	115.4	116.1	+ 1.7	114.7	+ 1.7
June	141.0	114.0	117.1	+ 0.9	116.2	+ 1.3
September	146.7	113.3	118.4	+ 1.1	117.6	+ 1.2
December	146.9	115.8	119.2	+ 0.7	118.5	+ 0.8
1996						
March	149.7	117.1	120.1	+ 0.8	119.0	- 0.4
June	150.5	116.0	120.6	+ 0.4	119.8	- 0.7
September	154.1	115.1	121.1	+ 0.4	120.1	- 0.3
December	154.8	116.8	121.3	+ 0.2	120.3	+ 0.2
1997						
March	159.4	120.5	121.9	+0.5	120.5	+0.2

¹ Further information on construction of CPI indexes is contained in the bulletin *The Australian Consumer Price Index Concepts, Sources and Methods* (Catalogue No. 6461.0).

² The CPI is now published on a reference base of 1989-90 = 100.0.
(Source: *Consumer Price Index*, ABS catalogue number 6401.0.)

PRICE INDEX OF MATERIALS USED IN BUILDING OTHER THAN HOUSE BUILDING, HOBART: **Original**
(Base year: 1989-90 = 100.0)

Index numbers for selected major building materials

<i>Period</i>	<i>Structural timber</i>	<i>Clay bricks</i>	<i>Ready mixed concrete</i>	<i>Precast concrete products</i>	<i>Steel decking, cladding etc.</i>	<i>Structural steel</i>
1996						
February	116.9	123.3	115.9	128.4	112.1	121.9
March	116.9	123.7	113.2	128.4	112.3	121.9
April	116.9	123.7	113.2	128.4	112.3	122.7
May	114.4	123.7	112.9	128.4	112.3	122.7
June	113.8	124.5	112.1	128.4	112.3	123.7
July	114.5	124.5	114.2	132.6	112.3	125.2
August	112.7	124.5	115.5	132.6	112.3	126.0
September	112.7	124.5	114.7	132.6	112.3	124.7
October	110.6	124.5	115.8	132.6	112.3	124.7
November	110.3	125.6	115.8	132.6	112.2	126.5
December	108.9	125.6	116.3	132.6	112.2	126.7
1997						
January	108.9	125.7	116.3	132.6	112.2	126.7
February p	108.9	125.7	116.6	132.6	118.6	126.7
March p	109.8	125.7	117.3	131.3	118.6	126.7
April p	108.9	125.7	117.3	131.2	118.6	126.7

Index numbers for selected major building materials

<i>Period</i>	<i>Reinforcing steel bar, fabric and mesh</i>	<i>Aluminium windows</i>	<i>Fabricated steel products</i>	<i>Builders' hardware</i>	<i>Sand & aggregate</i>	<i>Paint & other coatings</i>	<i>Non-ferrous pipes & fittings</i>
1996							
February	109.2	104.5	108.1	117.7	133.1	121.5	169.4
March	109.2	104.7	108.3	117.7	133.1	121.5	169.4
April	109.2	104.4	111.5	117.3	133.1	118.1	172.8
May	109.2	104.4	111.5	116.0	133.1	120.6	174.5
June	109.2	104.4	111.9	116.1	133.1	124.5	174.5
July	109.2	104.4	111.9	115.4	133.1	126.1	168.7
August	110.7	104.4	112.4	118.9	133.1	126.1	167.9
September	110.8	104.4	113.6	119.0	133.1	126.7	167.9
October	110.9	105.5	113.6	119.1	133.1	126.7	160.8
November	110.9	105.5	113.4	119.1	133.1	127.0	160.9
December	110.9	105.5	113.4	118.2	133.1	128.2	162.4
1997							
January	110.9	106.8	113.4	118.2	135.0	127.8	162.4
February p	111.0	106.8	113.4	118.0	134.2	127.3	163.1
March p	110.9	106.8	113.5	115.1	134.2	127.2	166.9
April p	110.9	106.8	113.5	115.1	134.2	127.2	166.9

(Source: Price Index of Materials Used in Other than House Building, ABS catalogue number 6407.0.)

continued

Period	All electrical materials		All mechanical services		All plumbing materials	
	Index	% change over previous period	Index	% change over previous period	Index	% change over previous period
1996						
February	117.8	—	115.4	+0.5	127.6	+0.1
March	118.6	+0.7	115.7	+0.3	127.6	—
April	118.3	-0.3	116.1	+0.3	126.6	-0.8
May	119.6	+1.1	116.1	—	127.1	+0.4
June	119.5	-0.1	116.5	+0.3	127.3	+0.2
July	119.5	—	116.3	-0.2	127.0	-0.2
August	113.7	-4.9	117.4	+0.9	126.0	-0.8
September	113.9	+0.2	117.6	+0.2	126.0	—
October	118.3	+3.9	117.3	-0.3	120.4	-4.4
November	118.3	—	116.5	-0.7	120.7	+0.2
December	118.3	—	116.5	—	121.2	+0.4
1997						
January	118.4	+0.1	116.6	+0.1	120.8	-0.3
February p	118.4	—	116.6	—	121.0	+0.2
March p	117.6	-0.7	117.1	+0.4	122.3	+1.1
April p	117.4	-0.2	117.1	—	122.5	+0.2
Period	All groups excluding electrical materials and mechanical services		All groups			
	Index	% change over previous period	Index	% change over previous period		
1996						
February	115.6	-0.3	115.2	-0.1		
March	115.3	-0.3	115.1	-0.1		
April	115.2	-0.1	115.1	—		
May	115.3	+0.1	115.2	+0.1		
June	115.3	—	115.3	+0.1		
July	116.1	+0.7	115.8	+0.4		
August	116.5	+0.3	115.9	+0.1		
September	116.3	-0.2	115.8	-0.1		
October	116.2	-0.1	116.0	+0.2		
November	116.6	+0.3	116.1	+0.1		
December	116.7	-0.1	116.2	+0.1		
1997						
January	116.8	+0.1	116.3	+0.1		
February p	117.1	+0.3	116.5	+0.2		
March p	117.1	—	116.6	+0.1		
April p	117.3	+0.2	116.7	+0.1		

(Source: Price Index of Materials Used in Other than House Building, ABS catalogue number 6407.0.)

Year or month	Dairy products ¹			Staff-hours worked ²	
	Whole milk ³	Factory butter ⁴	Factory cheese	Textile manufacturing ⁵	Vegetable preserving
	million litres	tonnes	tonnes	'000	'000
1993-94	447.3	7 846	22 461	1 575	2 002
1994-95	436.5	8 105	20 529	1 527	1 838
1995-96	513.8	9 589	25 371	1 443	1 784
1994					
March	39.8	841	1 577	150	188
1996					
March	45.7	936	1 818	122	178
1997					
January	56.1	1 181	2 481	71	100
February	48.2	1 090	2 165	113	155
March	47.6	903	2 031	116	141
Year or month	Newsprint ⁶	Refined zinc	Metal, refin. index ⁷	Electricity	
				Gas	
				'000 tonnes	'000 tonnes
1993-94	208.9	193.8	105.5	8 855	55 767
1994-95	222.7	189.8	98.3	8 688	51 933
1995-96	242.9	207.8	104.7	9 100	41 035
1994					
March	19.0	14.4	101.2	728	3 871
1996					
March	20.8	17.6	102.6	724	2 425
1997					
January	20.0	16.3	116.9	741	—
February	16.8	14.6	106.0	670	—
March	19.8	17.3	119.8	756	—

¹ Source: Australian Dairy Corporation.

² Changing productivity per staff-hour makes these indicators unsatisfactory for long-term comparisons.

³ Includes the whole milk equivalent of farm cream intake.

⁴ Includes butter equivalent of butter oil.

⁵ Includes spinning, weaving and carpet making. Reported by establishments which manufacture textiles only, or manufacture clothing and textiles in the one plant.

⁶ Excludes production of directory newsprint and high grade specialty paper.

⁷ Metallurgical refining index (Base: 1979-80 = 100.0) Output from selected establishments covering the smelting and refining of ferro-alloys, zinc and aluminium. The weighting pattern is based on the establishments' value added as derived from the 1979-80 Manufacturing Census. For multi-product establishments, value added was apportioned to products on the basis of gross receipts from each product.

(Source: ABS unpublished data.)

20

LIVESTOCK SLAUGHTERING: Original

Year or month	Cattle					
	Bulls, bullocks and steers	Cows and heifers	Calves	Sheep	Lambs	Pigs
	'000	'000	'000	'000	'000	'000
1993-94	101.8	85.2	23.2	526.1	437.8	95.8
1994-95	111.2	96.7	28.8	569.3	477.2	92.9
1995-96	95.4	88.9	41.4	349.7	393.3	86.5
1995						
April	9.5	9.8	1.0	46.3	41.1	7.2
1996						
April	6.3	6.7	0.9	28.4	29.6	6.4
May	10.4	10.8	1.4	37.0	37.9	7.7
June	8.7	9.2	0.7	27.7	31.8	7.0
July	p 7.3	5.8	1.8	21.6	25.3	7.2
August	p 6.2	4.6	13.4	13.2	21.2	6.3
September	p 6.4	5.2	16.8	14.0	25.4	6.3
October	p 7.6	6.4	6.1	19.8	25.2	5.9
November	p 9.4	8.0	0.6	32.3	27.1	5.7
December	p 12.3	8.9	0.2	42.0	28.2	7.0
1997						
January	p 12.8	8.1	0.1	47.5	42.8	6.8
February	p 10.6	8.8	0.1	47.4	35.6	6.2
March	p 10.1	8.1	0.4	43.5	35.0	6.6
April	p 10.3	11.0	1.6	47.6	35.2	6.8

(Source: *Livestock Products, Australia*, ABS catalogue number 7215.0.)

21

LIVESTOCK SLAUGHTERING: Seasonally adjusted and trend

Month	Seasonally adjusted			Trend		
	Cattle and calves	Sheep and lambs	Pigs	Cattle and calves	Sheep and lambs	Pigs
	'000	'000	'000	'000	'000	'000
1995						
April	23.1	83.1	7.7	22.7	79.7	7.8
1996						
April	16.0	56.0	7.0	18.6	59.5	7.1
May	21.5	63.3	6.8	19.0	59.1	7.0
June	21.0	57.1	6.6	19.5	58.6	6.9
July	18.1	65.0	7.3	20.1	57.7	6.7
August	19.8	52.4	6.5	20.5	56.7	6.6
September	23.1	55.8	6.8	20.8	56.5	6.4
October	19.7	53.8	6.0	21.0	57.7	6.3
November	20.4	60.0	5.6	21.3	60.2	6.3
December	23.7	62.8	6.0	21.8	63.5	6.4
1997						
January	21.6	73.4	7.5	22.3	66.8	6.7
February	22.4	71.4	7.2	22.9	69.5	6.9
March	22.5	62.5	6.7	23.6	71.7	7.1
April	26.5	78.3	7.1	24.5	73.6	7.2

(Source: ABS unpublished data)

22 MEAT PRODUCTION¹: Original

Year or month	Beef tonnes	Veal tonnes	Mutton tonnes	Lamb tonnes	Pigmeat ² tonnes	Total tonnes
1993-94	47 458	515	9 992	7 047	6 019	71 031
1994-95	49 907	977	11 230	8 412	5 982	76 509
1995-96	45 377	875	7 414	7 407	5 634	66 707
1995						
April	4 370	36	884	689	464	6 444
1996						
April	3 066	22	593	557	423	4 661
May	5 246	34	779	715	502	7 276
June	4 461	18	578	600	456	6 113
July p	3 271	39	448	474	469	4 702
August p	2 638	272	270	398	411	3 990
September p	2 878	339	286	478	410	4 392
October p	3 434	125	409	474	386	4 827
November p	4 262	15	700	510	368	5 855
December p	5 559	7	928	528	456	7 479
1997						
January p	5 434	5	1 020	806	456	7 721
February p	4 976	6	1 019	670	413	7 083
March p	4 635	13	927	658	431	6 664
April p	5 394	38	1 014	663	445	7 553

¹ Carcass weight.

² Includes pork used for production of bacon and ham.

(Source: *Livestock Products, Australia*, ABS catalogue number 7215.0.)

23 PRINCIPAL MINERAL CONCENTRATES PRODUCED: Original

Year or quarter	Copper	Iron (pellets)	Lead	Lead- zinc	Tin	Zinc
Year or quarter	'000 tonnes	'000 tonnes	'000 tonnes	'000 tonnes	'000 tonnes	'000 tonnes
1993-94	128.1	1 565.9	93.4	57.5	13.4	316.5
1994-95	59.4	1 483.8	97.4	45.3	14.3	350.6
1995-96	53.5	1 681.3	106.3	38.6	16.0	361.5
1995						
December	7.8	416.0	29.7	6.8	4.1	98.1
1996						
March	19.8	326.9	24.1	11.4	3.5	84.8
June	21.5	475.4	24.1	9.2	4.3	85.0
September	26.0	439.3	30.6	10.3	3.9	88.6
December	25.6	366.7	24.9	11.0	4.0	89.5
1997						
March	24.0	3.3	22.9	10.2	3.9	85.6

(Source: *Tasmania—Development and Resources*)

24

SAWMILLS AND PLYWOOD MILLS, LOGS DELIVERED AND TIMBER PRODUCED: **Original**

Year or quarter	Tasmanian-grown logs delivered					Sawn, peeled and sliced timber produced ¹				
	Eucalypts	Hardwoods, excluding eucalypts ²	Plantation ³ softwoods	Native softwoods ⁴	Total	Eucalypts	Hardwoods, excluding eucalypts ²	Plantation ³ softwoods	Native softwoods ⁴	Total
1993-94	584.3	15.3	299.2	1.5	900.4	203.5	3.1	141.0	0.5	348.0
1994-95	653.1	12.6	304.9	2.8	973.4	212.5	4.3	142.7	0.6	360.1
1995-96	602.8	13.0	343.7	1.4	960.9	192.4	4.4	152.0	0.5	349.3
1995										
March	132.3	3.0	82.5	1.1	218.9	44.5	1.0	37.0	0.1	82.6
June	187.6	2.1	77.4	0.7	267.8	53.4	1.1	34.6	0.1	89.2
September	184.3	1.8	79.9	0.2	266.2	55.4	1.3	36.0	0.1	92.8
December	139.1	1.5	70.2	0.2	211.0	49.0	1.0	36.0	0.2	86.2
1996										
March	136.6	6.7	98.1	0.3	241.7	41.5	0.9	41.2	0.1	83.7
June	142.9	3.0	95.5	0.6	242.0	46.5	1.2	38.8	0.1	86.6
September	134.4	2.4	97.3	—	234.1	47.3	1.1	43.0	0.1	91.4
December	111.8	3.7	83.3	0.5	199.3	40.1	0.9	41.2	0.1	82.3
1997										
March	107.9	6.3	86.1	0.4	200.6	34.0	0.9	37.1	—	72.1

¹ Includes plywood, veneer and sliced timber production converted to an equivalent cubic measurement.
² Includes blackwood, myrtle, sassafras etc.
³ Radiata pine.
⁴ Includes Huon pine, celery top pine and King William pine.
(Source: ABS unpublished data.)

25

CHIPPING AND GRINDING OF WOOD¹: **Original**

Year or quarter	Producing locations ²	Materials used ³		
		Logs delivered ⁴	Sawmill offcuts	Chipped and ground wood production
		'000 m ³	'000 m ³	('000 tonnes green weight)
1993-94	30	3 448.8	339.8	3 726.1
1994-95	31	4 064.1	394.2	4 343.1
1995-96	31	3 510.0	457.9	3 820.1
1995				
March	31	1 090.6	95.7	1 177.1
June	31	967.9	120.1	1 059.3
September	32	935.6	118.2	1 044.1
December	31	932.1	104.6	939.9
1996				
March	32	842.6	109.8	958.0
June	31	799.6	125.3	878.1
September	30	767.5	133.5	870.9
December	30	805.1	117.9	908.4
1997				
March	28	759.7	87.0	829.2

¹ Both hardwoods and softwoods, separate details are not available.
² Capable of producing at end of year or actually producing during quarter.
³ Data reported by weight, converted to cubic measure by the factor 0.95 m³ per tonne.
⁴ Includes log equivalent of limbwood and billets.
(Source: ABS unpublished data.)

Year or quarter	Sawmilling and plywood milling			Chipping and grinding ¹			Total		
	Crown land ²	Private land	Total	Crown land ²	Private land	Total	Crown land ²	Private land	Total
	'000 m ³	'000 m ³	'000 m ³	'000 m ³	'000 m ³	'000 m ³	'000 m ³	'000 m ³	'000 m ³
1993-94	696.5	203.9	900.4	1 697.0	1 751.8	3 448.8	2 393.5	1 955.7	4 349.2
1994-95	780.3	193.2	973.4	1 966.8	2 097.3	4 064.1	2 747.1	2 290.4	5 037.6
1995-96	773.5	187.4	960.9	1 579.6	1 930.4	3 510.0	2 353.1	2 117.8	4 470.9
1995									
March	184.7	34.2	218.9	480.3	610.3	1 090.6	665.0	644.5	1 309.5
June	215.2	52.7	267.8	537.6	430.3	967.9	752.8	483.0	1 235.8
September	214.1	52.2	266.2	438.2	497.4	935.6	652.2	549.6	1 201.9
December	165.2	45.8	211.0	388.3	543.8	932.1	553.5	589.6	1 143.1
1996									
March	202.3	39.4	241.7	405.3	437.3	842.6	607.6	476.7	1 084.3
June	191.9	50.1	242.0	347.9	451.8	799.6	539.7	501.8	1 041.6
September	194.2	39.9	234.1	403.5	364.0	767.5	597.8	403.9	1 001.7
December	162.5	36.8	199.3	411.0	394.1	805.1	573.4	430.9	1 004.3
1997									
March	170.1	30.5	200.6	375.7	383.9	759.7	545.8	414.5	960.3

¹ Logs used are generally below sawmilling standard; includes log equivalent of limbwood and billets.

² Comprises all areas (including concession areas) from which royalties are payable to Forestry Tasmania.
(Source: ABS unpublished data.)

27

BUILDING APPROVALS: Original

Year or month	New residential building				Value				
	Houses	Other ¹	Con-versions etc.	Total dwelling units	New dwelling units	Alterations and additions ² to residential building	Non-residential building ³		Total of all building
							Private	Total	
no.	no.	no.	no.	\$'000	\$'000	\$'000	\$'000	\$'000	
1993-94	3 113	1 034	11	4 158	301 963	39 522	81 251	145 922	487 407
1994-95	2 576	596	14	3 176	244 623	39 963	117 984	161 567	446 152
1995-96	1 938	601	7	2 546	217 445	36 890	119 849	216 752	471 086
1994									
April	243	36	—	279	20 449	3 740	9 620	10 799	34 988
1996									
April	141	104	1	246	22 811	3 669	9 953	11 840	38 321
1997									
January	118	25	10	153	12 241	3 513	9 258	10 878	26 632
February	129	24	—	153	13 702	3 253	8 862	12 507	29 461
March	125	—	—	125	10 922	3 719	7 861	10 140	24 781
April	144	51	1	196	16 900	3 165	4 758	5 454	25 520

¹ New individual dwelling units (e.g. flats, home units and villa units).
² Valued at \$10,000 and over.
³ Comprises non-residential building (new plus alterations and additions) valued at \$50,000 and over.
(Source: *Building Approvals, Tasmania*, ABS catalogue number 8731.6.)

28

SECURED HOUSING COMMITMENTS¹: Original, seasonally adjusted and trend

Month	Total number of dwellings ²			Total value of commitments		
	Original	Seasonally adjusted	Trend	Original	Seasonally adjusted	Trend
	no.	no.	no.	\$'000	\$'000	\$'000
1996						
February	911	887	904	63.3	62.7	61.6
March	988	884	877	69.4	61.0	59.9
April	849	888	859	58.9	61.3	59.4
May	942	825	857	64.7	55.6	60.9
June	841	830	872	58.3	61.0	64.0
July	1 032	1 012	1 069	66.1	64.7	68.0
August	1 163	1 175	1 088	77.2	79.6	71.2
September	1 067	1 098	1 081	68.8	70.4	72.0
October	1 117	1 155	1 040	75.9	80.8	70.0
November	909	924	974	60.7	61.5	65.8
December	787	845	902	54.4	57.6	61.2
1997						
January	742	810	847	49.5	51.6	57.8
February	778	793	815	56.1	56.9	56.1
March	814	799	800	59.2	57.9	55.5
April	933	881	794	64.0	59.4	55.2

¹ Commitment is a firm offer of housing finance. It either has been, or is normally expected to be, accepted. Includes commitments to provide housing finance to employees and commitments accepted and cancelled in the same month. Excludes alterations and additions. Includes refinancing.
² Includes new dwellings, established dwellings and refinancing. Excludes alterations and additions.
(Source: *Housing Finance for Owner Occupation, Australia*, ABS catalogue 5609.0.)

29

BANKING STATISTICS¹: Original

Month	Deposits				
	Current bearing interest	Current – not bearing interest	Fixed	Investment savings accounts	Statement savings accounts
	\$m	\$m	\$m	\$m	\$m
1996					
April	689	270	1 693	547	160
May	674	262	1 697	541	158
June	659	260	1 707	541	158
July	687	253	1 737	540	161
August	692	249	1 758	543	163
September	690	240	1 768	552	165
October	699	238	1 787	559	168
November	692	237	1 791	560	169
December	699	244	1 771	570	188
1997					
January	662	246	1 763	583	235
February	695	241	1 764	605	229
March	692	252	1 780	606	231
April	687	250	1 791	600	231

Month	Deposits			
	Passbook/School savings accounts	Other	Total	- Loans ²
	\$m	\$m	\$m	\$m
1996				
April	168	130	3 657	4 471
May	164	127	3 623	4 511
June	161	128	3 615	4 529
July	156	127	3 660	4 532
August	153	127	3 685	4 541
September	151	129	3 694	4 520
October	147	129	3 728	4 545
November	140	132	3 722	4 513
December	134	133	3 739	4 533
1997				
January	127	129	3 745	4 466
February	123	103	3 759	4 493
March	122	103	3 786	4 694
April	121	102	3 781	4 412

¹ Details are the averages of weekly figures for each month. The figures are derived from returns submitted by banks authorised under the *Banking Act* together with similar returns voluntarily submitted by the State banks; they exclude the Reserve Bank.

² Excludes non-resident loans.

(Source: Reserve Bank of Australia.)

30

PRIVATE NEW CAPITAL EXPENDITURE BY TYPE OF ASSET¹: Original

Year or quarter	New buildings and structures	Equipment, plant, and machinery	Total
	\$m	\$m	\$m
1993–94	100	341	441
1994–95	133	503	636
1995–96	178	394	571
1996			
March	45	94	139
June	37	116	153
September	33	114	146
December	34	153	187
1997			
March	29	136	165

¹ Estimates based on a sample survey and therefore subject to sampling variability. Covers selected industries only—mining, manufacturing, finance, property and other selected industries.

(Source: State Estimates of Private New Capital Expenditure, ABS catalogue number 5646.0.)

31

PASSENGER ARRIVALS AND DEPARTURES, TASMANIA¹: Original

Period	By air				Cruise ships		
	Interstate arrivals	International arrivals	By sea	Total	Total departures ²	Arrivals	Departures
1993	694 244	5 144	115 381	814 769	814 835	2 033	2 033
1994	745 508	4 166	128 644	878 318	880 936	6 592	6 592
1995	811 784	3 982	116 869	932 635	931 278	6 199	6 199
1996	829 654	2 999	115 486	948 139	960 569	5 286	5 286
1995							
December	84 067	452	11 972	96 491	80 306	1 590	1 590
1996							
October	68 956	352	10 073	79 381	79 774	—	—
November	68 037	431	11 341	79 809	78 803	—	—
December p	79 002	295	12 703	92 000	80 667	850	850

¹ The following persons are not included in these statistics: passengers under three years of age accompanied by an adult; passengers travelling on chartered flights with minor carriers; passengers travelling on private or VIP flights; and passengers from or departing for overseas other than direct flights to New Zealand.

² The proportion of departing passengers who were visitors was shown to be about 58% in the 1981 Tasmanian Visitor Survey, 55% in the 1984 Tasmanian Visitor Survey, 53% in the 1986 Tasmanian Visitor Survey, 65% in the 1990 Tasmanian Visitor Survey, 60% in the 1994 survey, and 58% in the 1995 Tasmanian Visitor Survey.

(Source: Tourism Tasmania.)

32

TOTAL PASSENGER ARRIVALS BY AIR AND SEA, TASMANIA: Original, seasonally adjusted and trend

Period	Original	Seasonally adjusted ¹	Trend
1995			
December	96 491	77 749	77 754
1996			
October	79 381	81 475	80 076
November	79 809	81 484	78 838
December p	92 000	73 496	77 759

¹ There is an annual recalculation of seasonal adjustment factors to include the most recent year's arrivals. This occurs at the end of each financial year and may cause revisions to previously published seasonally adjusted and trend figures. A full time series of seasonally adjusted and trend series from January 1971 is available on request, telephone (03) 6220 5870.
(Source: Tourism Tasmania. ABS unpublished data.)

HOTELS, MOTELS, ETC. WITH FACILITIES						
Period	Original		Room nights		Original	
	Establishments ¹ no.	Guest rooms ¹ no.	Seasonally adjusted ² no.	Trend estimates ² no.	Room occupancy rate %	Takings from accommodation \$'000
March quarter						
1995	177	5 380	n.a.	n.a.	68.2	24 963
1996	180	5 520			67.1	26 267
1997	189	5 611			62.9	25 850
1995						
January	n.a.	n.a.	84 462	86 826	61.8	7 971
February	n.a.	n.a.	89 522	86 896	69.2	7 713
March	177	5 380	89 885	87 220	73.7	9 279
1996						
January	n.a.	n.a.	88 997	90 353	62.6	8 575
February	n.a.	n.a.	91 402	89 251	69.1	8 514
March	180	5 520	87 965	88 025	69.8	9 178
1997						
January	n.a.	n.a.	81 159	86 359	56.0	8 135
February	n.a.	n.a.	87 577	86 056	65.4	8 352
March	189	5 611	87 267	86 334	67.5	9 362
HOLIDAY UNITS						
Period	Original		Unit nights		Original	
	Establishments ¹ no.	Units ¹ no.	Seasonally adjusted ² no.	Trend estimates ² no.	Unit occupancy rate %	Takings from accommodation \$'000
March						
1995	55	867	n.a.	n.a.	72.7	4 391
1996	54	830			64.2	3 835
1997	57	862			65.5	3 961
1995						
January	n.a.	n.a.	14 001	14 297	75.9	1 649
February	n.a.	n.a.	14 704	14 601	70.1	1 334
March	55	867	14 828	14 780	71.9	1 408
1996						
January	n.a.	n.a.	12 240	12 818	69.0	1 477
February	n.a.	n.a.	12 353	12 771	61.8	1 174
March	54	830	12 136	12 681	61.8	1 184
1997						
January	n.a.	n.a.	12 904	13 258	69.8	1 550
February	n.a.	n.a.	12 980	13 216	62.6	1 150
March	57	862	12 965	13 118	63.7	1 262
CARAVAN PARKS						
Period	Original		Site nights		Original	
	Establishments ¹ no.	Sites and cabins ¹ no.	Seasonally adjusted ² no.	Trend estimates ² no.	Site occupancy rate %	Takings from accommodation \$'000
March quarter						
1995	75	6 834	n.a.	n.a.	39.2	2 886
1996	72	6 524			42.1	3 126
1997	73	6 568			43.8	3 199
1995						
January	n.a.	n.a.	63 575	65 044	45.5	1 156
February	n.a.	n.a.	65 183	65 070	38.1	887
March	75	6 834	64 164	65 209	34.0	844
1996						
January	n.a.	n.a.	64 854	65 931	48.5	1 249
February	n.a.	n.a.	65 465	65 858	40.4	1 000
March	72	6 524	69 259	65 832	37.3	878
1997						
January	n.a.	n.a.	64 749	66 798	49.7	1 304
February	n.a.	n.a.	67 675	67 213	41.1	953
March	73	6 568	69 764	67 782	40.4	941

¹ At end of quarter. ² Seasonally adjusted and trend estimates are revised annually because of yearly seasonal re-analysis.
(Source: *Tourist Accommodation, Tasmania*, ABS catalogue number 8635.6.)

34 REGISTRATIONS OF NEW MOTOR VEHICLES¹: Original

Year or month	Passenger vehicles	Other vehicles ²	Total (excl. motor cycles)	Vehicles registered by vehicle rental businesses ³	Motor cycles
	no.	no.	no.	no.	no.
1994	10 543	2 837	13 380	1 708	376
1995	10 919	2 874	13 793	1 952	393
1996	11 445	2 726	14 171	2 384	462
1995					
April	593	226	819	1	24
1996					
April	659	159	818	—	30
May	916	286	1 202	3	44
June	744	250	994	9	32
July	1 099	242	1 341	232	26
August	1 040	296	1 336	216	52
September	1 171	177	1 348	448	38
October	1 042	265	1 307	213	35
November	1 072	195	1 267	370	50
December	1 491	246	1 737	823	48
1997					
January	756	179	935	4	49
February	746	152	898	3	34
March	738	220	958	3	39
April	815	232	1 047	1	46

¹ Includes State and Commonwealth Government-owned motor vehicles other than those belonging to the defence services. Excludes tractors, plant and equipment, caravans and trailers.

² Comprises utilities, panel vans, rigid and articulated trucks and other truck-type vehicles (i.e. motor vehicles designed for purposes other than freight carrying, e.g. campervans, tow trucks, ambulances and hearses) and buses.

³ These figures are included in previous columns.

(Source: *Motor Vehicle Registrations Australia*, ABS catalogue number 9301.0. ABS unpublished data.)

35 TURNOVER OF RETAIL ESTABLISHMENTS AT CURRENT PRICES¹: Original and trend

Period	Original \$m	Trend estimates	
		\$m	Change from corresponding month of previous year %
1995			
April	229.7	235.9	2.1
1996			
April	237.8	247.3	5.0
May	250.3	246.7	4.3
June	230.6	245.5	3.6
July	229.1	244.3	3.1
August	238.2	243.7	2.8
September	222.5	243.8	2.6
October	249.1	244.7	2.4
November	257.9	246.2	2.3
December	324.3	247.5	2.0
1997			
January	247.4	248.5	1.6
February	224.7	249.3	1.3
March	242.2	250.4	1.3
April	245.9	250.8	1.4

¹ Survey has been re-designed—see Information Paper (8511.0).

(Source: *Retail Trade, Australia*, ABS catalogue number 8501.0.)

	NSW	Vic.	Qld	SA	WA	Tas.	Aust. ¹
Population							
Estimated resident population, December 1996 ('000) p	6 240.9	4 581.6	3 374.3	1 476.8	1 782.7	474.2	18 426.9
Proportion of Australian population, December 1996 (%) p	33.9	24.9	18.3	8.0	9.7	2.6	100.0
Population growth rate, 12 months to December 1996 (%) p	1.3	0.9	2.2	0.4	1.9	—	1.3
Labour Force							
Employment growth, 12 months to May 1997 (trend series) (%)							
Males	0.9	0.2	- 0.7	0.2	3.0	- 3.2	0.5
Females	1.0	1.5	3.9	0.6	0.4	- 3.4	1.6
Persons	1.0	0.8	1.3	0.4	1.9	- 3.3	1.0
Unemployment rate (trend series), May 1997 (%)	8.2	9.1	9.7	9.7	7.2	10.8	8.8
Unemployment growth, 12 months to May 1997 (trend series) (%)	4.3	7.0	6.9	3.7	- 4.3	- 0.8	4.1
Participation rate (trend series), May 1997 (%)	62.2	63.4	64.2	62.0	65.5	59.0	63.3
Average weekly overtime worked per employee, February 1997 (hours)	1.1	1.2	1.0	1.0	1.1	0.9	1.1
Job vacancy rate, February 1997 (%)	1.0	0.8	1.0	0.7	1.1	1.0	0.9
Working days lost through industrial disputes, 12 months to February 1997 (days per '000 employees)	154	123	159	76	70	73	129
Wages and Prices							
Average weekly total earnings, full-time adult employees (trend series) February 1997 (\$)							
Males	822.3	787.7	742.6	735.8	805.7	738.4	790.7
Females	656.4	626.7	595.4	598.1	601.5	588.5	630.9
Persons	758.9	733.4	691.4	689.6	733.8	686.7	733.3
Average weekly total earnings, full-time adult employees, growth rate, 12 months to February 1997 (%)	1.9	4.5	6.6	4.0	1.5	5.5	3.7
Consumer price index, all groups, annual growth to March quarter 1997 (%) ²	1.3	1.5	1.6	0.8	0.9	1.5	1.3
Building							
% change in the number of new residential dwelling units approved in 12 months ended April 1997, over the same period previous year	2.1	- 0.5	6.1	- 4.5	- 9.2	- 24.1	0.0
Finance and Retail Trade							
% change in private new capital expenditure, 12 months ended March 1997, over the same period previous year	14.6	25.2	28.8	29.6	- 6.7	3.3	16.6
% change in trend estimates turnover of retail establishments, April 1997 (change from corresponding month of the previous year)	- 0.4	7.8	3.2	0.0	1.9	1.4	2.3
Transport							
% change in number of new motor vehicles (excluding motorcycles) registered 12 months ended April 1997, over the same period previous year	2.2	6.0	2.9	- 2.1	6.6	6.9	3.2
Agriculture							
% change in the number of livestock slaughtered 12 months ended April 1997 over the same period previous year							
Cattle and calves	3.0	7.1	- 5.3	- 8.9	- 0.2	9.5	0.8
Sheep and lambs	- 3.9	0.9	17.0	- 3.3	19.7	- 2.1	1.3
Tourism							
Room occupancy rates for hotels, motels etc. with facilities, December quarter 1996 (%)	60.9	56.0	62.7	54.9	60.3	54.8	59.9
Australian National and State Accounts							
% change in GSP (GDP), Average 1989-90 Prices							
Trend Series							
Dec. qtr 1996 to Mar. qtr 1997	0.4	1.4	0.6	0.4	1.1	1.0	1.1
Mar. qtr 1996 to Mar. qtr 1997	3.5	2.7	3.8	1.0	3.9	1.0	3.6

¹ Australian totals include the ACT and NT.² CPI applies to State capitals.

EXPLANATORY NOTES

INTRODUCTION

1 This publication contains latest figures for a comprehensive range of economic indicators. Statistics shown in this publication are the latest available at the date of preparation and may be subject to revision in subsequent issues. In a number of cases figures appearing in this publication are preliminary and are subject to revision in subsequent issues. Reference should therefore always be made to the latest issue or to the statistical publication on the specific subject.

SEASONAL ADJUSTMENT AND TREND ESTIMATION

2 Seasonal adjustment is a means of removing the estimated effects of normal seasonal variation from the series so that the effects of other influences on the series can be more clearly recognised. Seasonal adjustment does not aim to remove the irregular or non-seasonal influences which may be present in any particular month. This means that month-to-month movements of the seasonally adjusted estimates may not be reliable indicators of trend behaviour.

3 The smoothing of seasonally adjusted series reduces the impact of the irregular components of the seasonally adjusted series and creates trend estimates. These trend estimates are derived by applying a 13-term Henderson-weighted moving average to all months except the last six. The last six monthly trend estimates are obtained by applying surrogates of the Henderson average to the seasonally adjusted series. Trend series are used to analyse the underlying behaviour of the series over time.

4 While this smoothing technique enables estimates to be produced for the latest month, it does result in revisions to the most recent months as additional observations become available. Generally, subsequent revisions become smaller and after 3 months have a negligible impact on the series. Revisions also occur as a result of the annual review of seasonal factors.

5 Users may wish to refer to the ABS Publication *A Guide to Interpreting Time Series – Monitoring 'Trends' – An Overview* (1348.0) for more detailed information on smoothing seasonally adjusted time series data.

RELATED PUBLICATIONS

6 Current publications produced by the ABS are listed in the *Catalogue of Publications and Products* (1101.0). The ABS also issues, on Tuesdays and Fridays, the *Release Advice* (1105.0) which lists publications to be released in the next few days. The *Catalogue* and *Release Advice* are available from any ABS office.

UNPUBLISHED STATISTICS

7 As well as the statistics included in this and related publications, the ABS may have other relevant unpublished data available. Inquiries should be made to Information Inquiries on (03) 6222 5800 or to any ABS office.

EFFECTS OF ROUNDING

8 Some figures have been rounded and discrepancies may occur between totals and sums of the component items.

SYMBOLS AND OTHER USAGES

n.a.	not available
n.y.a.	not yet available
..	not applicable
—	nil or rounded to zero
p	preliminary—figure or series subject to revision
r	figure or series revised since previous issue



